

FARBKARTE COLOR TABLE

HINWEISE SIEHE UNTEN NOTES BELOW



DEINE AUSGANGSHAARFARBE YOUR INITIAL HAIR COLOR



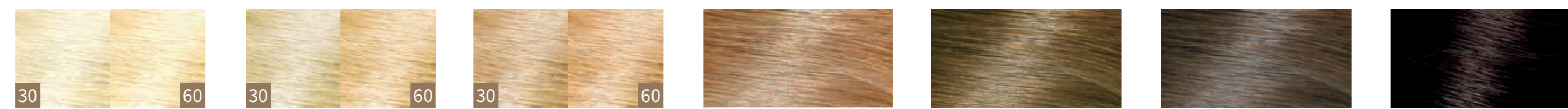
Senna / Cassia
Senna / Cassia



Goldhauch
Golden Hint



Hellblond
Light Blonde



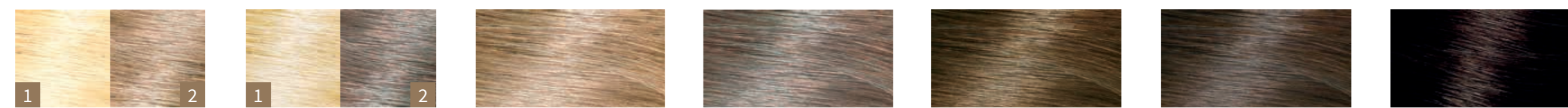
Sonnenblond
Sunrise



Mittelblond
Medium Blonde



Dunkelblond
Dark Blonde



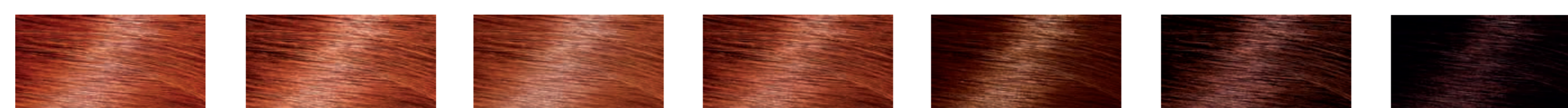
Kupfer
Copper



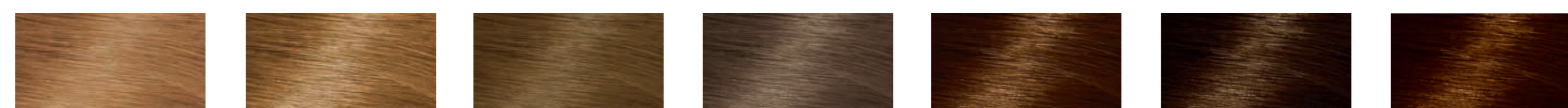
Reines Henna
Pure Henna



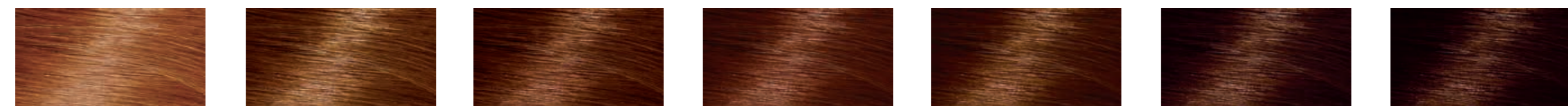
Henna, Amla & Jatropha
Henna, Amla & Jatropha



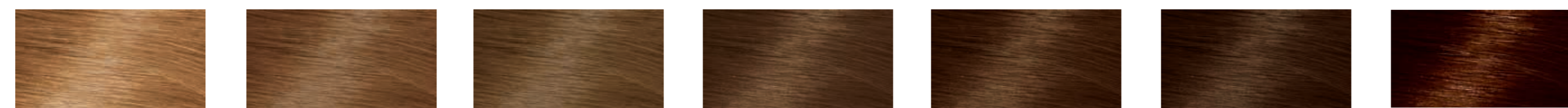
Goldbraun
Golden Brown



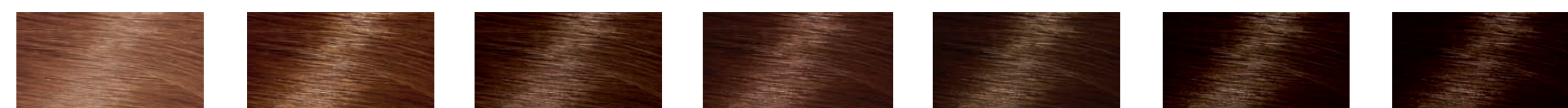
Hellbraun
Light Brown



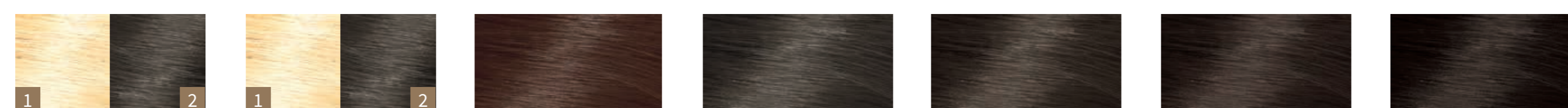
Mittelbraun
Medium Brown



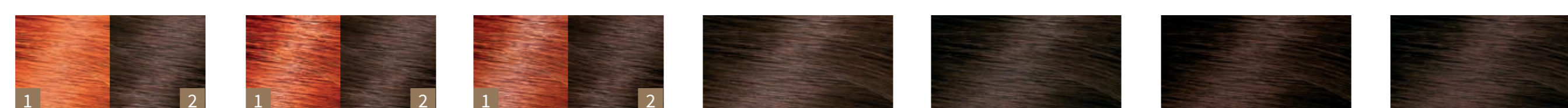
Nussbraun
Natural Hazel



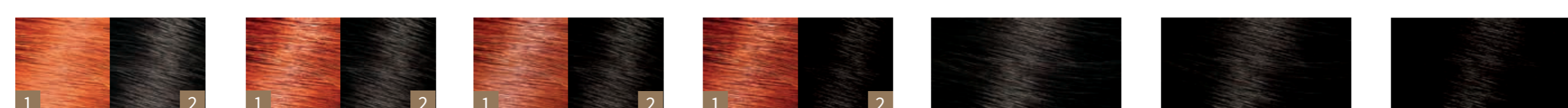
Aschbraun
Ash Brown



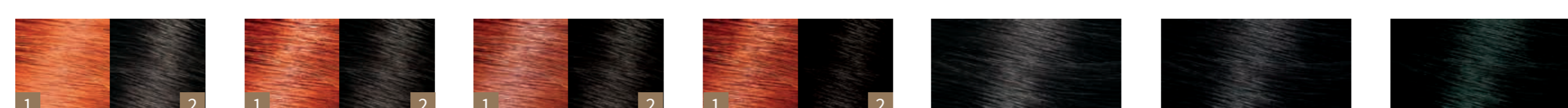
Dunkelbraun
Dark Brown



Schwarz
Black



Reines Indigo
Pure Indigo



1 Schritt 1: Vorpigmentierung (siehe Tabelle)
Step 1: Pre-coloring (see table below)

2 Schritt 2: Färbung mit der jeweiligen Farbe
Step 2: Coloring with the selected shade

30 = 30 Minuten Einwirkzeit
30-minute exposure time

60 = 60 Minuten Einwirkzeit
60-minute exposure time

Deine gewünschte khadi Nuance: Wenn Vorpigmentierung empfohlen (siehe Bildnummern) folgende khadi Nuance verwenden:

khadi Aschbraun	khadi Goldhauch
khadi Dunkelbraun	khadi Reines Henna
khadi Schwarz	khadi Reines Henna
khadi Reines Indigo	khadi Reines Henna
khadi Dunkelblond	khadi Goldhauch

Your selected khadi shade: If pre-coloring is recommended (see image numbering), use the following khadi shade:

khadi Ash Brown	khadi Golden Hint
khadi Dark Brown	khadi Pure Henna
khadi Black	khadi Pure Henna
khadi Pure Indigo	khadi Pure Henna
khadi Dark Blonde	khadi Golden Hint

Beachte, dass das Ergebnis einer Färbung immer abhängig von Deiner Ausgangshaarfarbe, Deiner individuellen Haarstruktur und der Einwirkzeit ist.

Please note that the results depend on your initial hair color, your individual hair structure and the exposure time.